

# JSB280 Driver Installation Instructions

---



Below you will find step-by-step sample instructions to download and install JSB280 Relay Module driver software with the Windows operating system. Some steps may differ according to your operating system and settings.

---

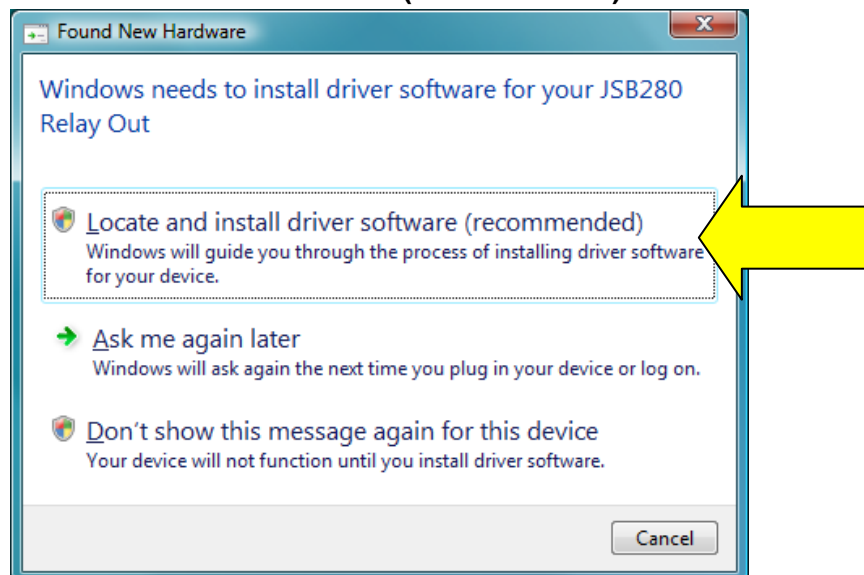
## System Requirements

Your computer needs these resources as a minimum to run JSB280 Relay Module driver software:

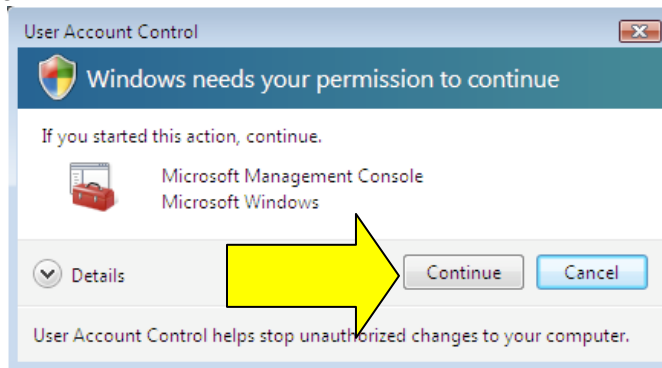
- Windows XP or higher.
  - 256 MB RAM (512 MB RAM recommended)
- 

1. Plug in the JSB280 Relay Module. The hardware installation wizard window should automatically appear. *If you insert the JSB280 CD before step 4 Windows Explorer may open automatically, close the window.*
- 

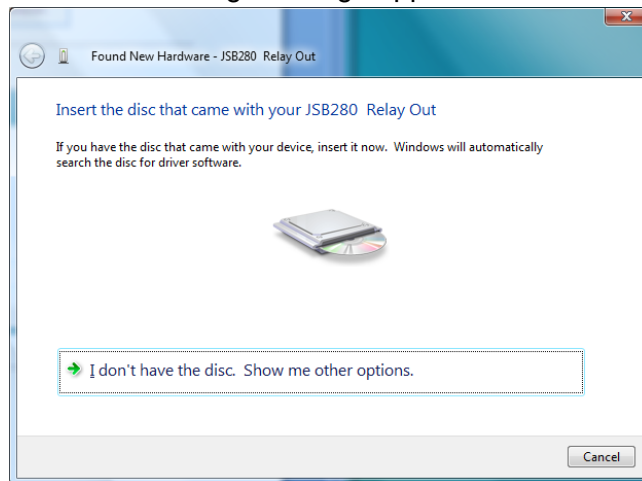
2. *Click on:* **Locate and install driver software (recommended)**



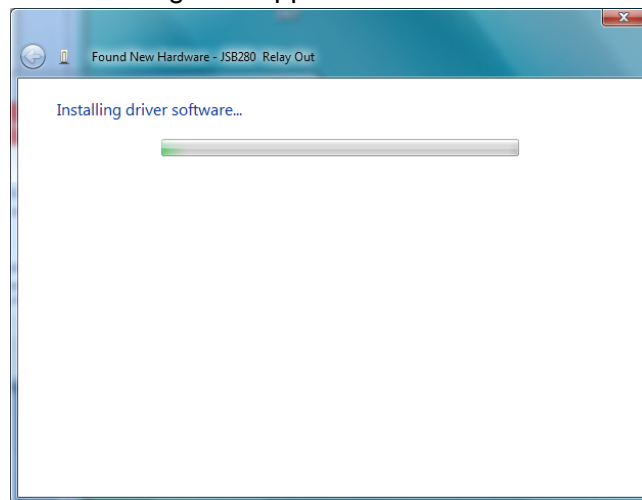
3. Click on: **Continue**



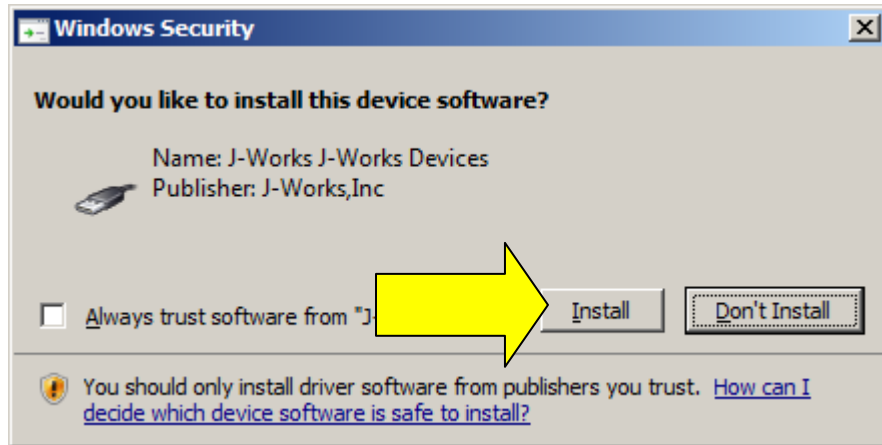
4. Insert JSB280 CD when the following message appears:



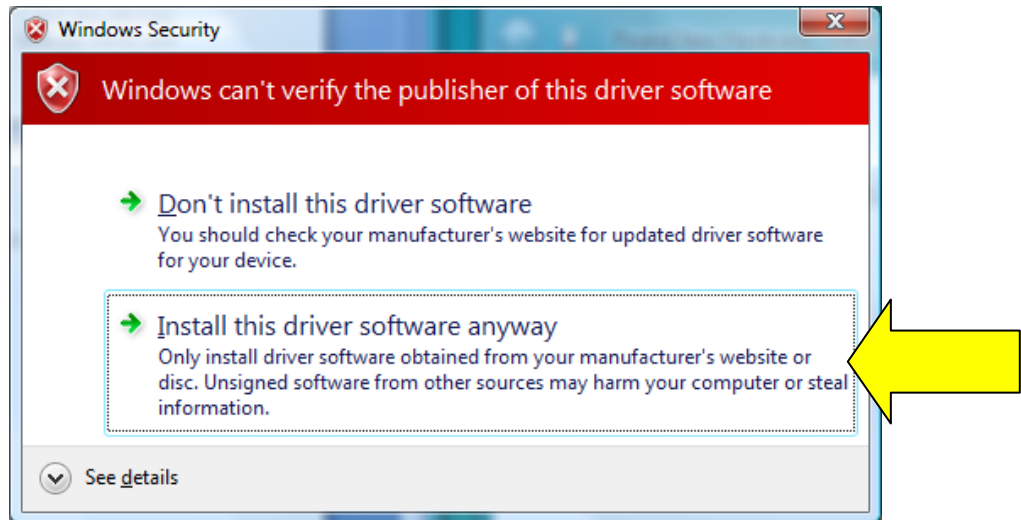
5. Installing driver software message will appear



6. One of two screens will show up:

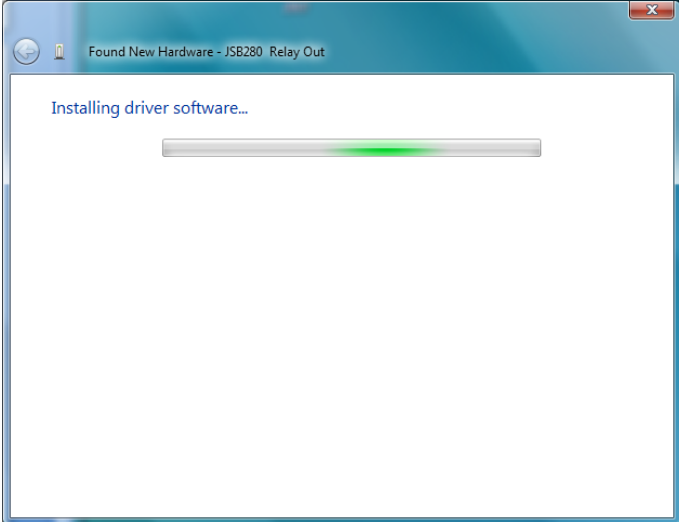


Or



Click on: **Install** or **Install this driver software anyway**

7. Installing driver software message will appear:



8. The software for this device has been successfully installed. *Click on: Close*

