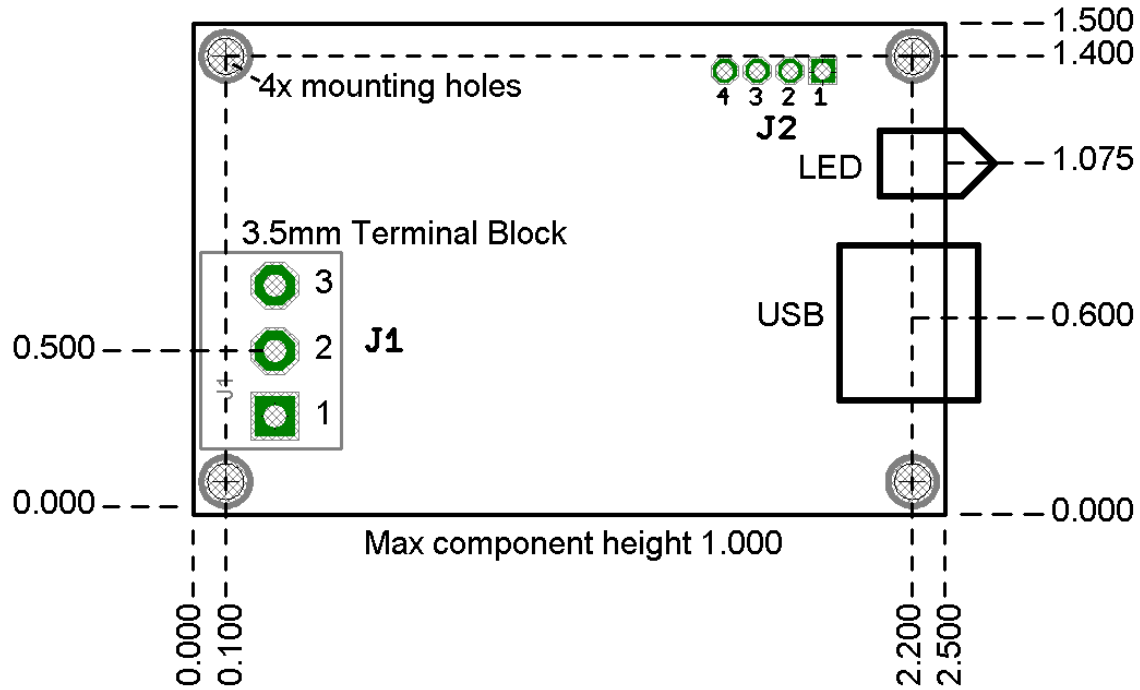


JSB381 Mechanical Detail



J1

- Pin 1 Relay NO (normally open)
- Pin 2 Relay Com (common)
- Pin 3 Relay NC (normally closed)

J2

- Pin 1 Analog Input to ADC high (+)(plus) pin
- Pin 2 Analog Input to ADC low (-)(minus) pin
- Pin 3 Digital Input (opto-isolated)
- Pin 4 Digital Input ground side (opto-isolated)